



ARIES MARINE CORPORATION

M/V RAM XVIII, M/V RAM XIX
Liftboat Class 215'

Dimensions:

Length Overall	137'
Length (Barge Only)	134'
Beam Overall	80'
Beam (Barge Only)	78'
Depth (Barge Only)	10'
Design Draft	11.5'
Open Deck Area	6,300 Sq.Ft

Generators & Capacities:

Engines	Two (2) CAT C6.6
Generator	Two (2) 158 KW
Fuel	17,841 Gallons
Potable Water	20,896 Gallons

Hull Characteristics & Legs:

Gross Tonnage	195
Net Tonnage	132
Max Deck Cargo	1,252,541#
Number of Legs	3
Length	215'
Size	72' Diameter
Wall Thickness	1" X 1-1/4" Braced Inside

Propulsion:

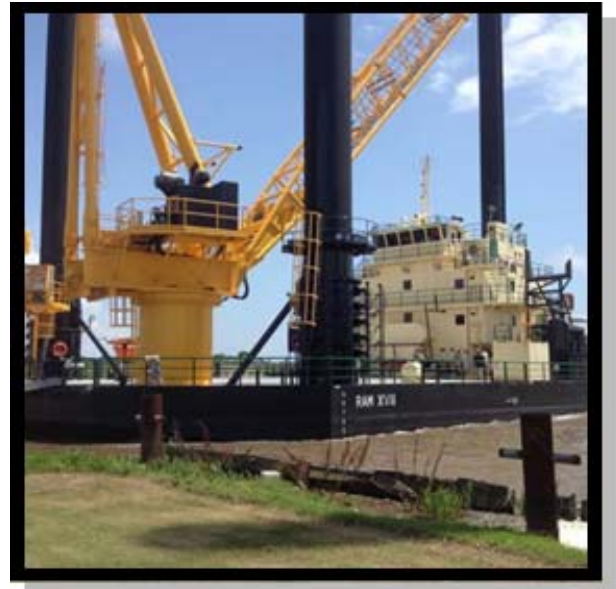
Main Engines	Two (2) CAT - C32
Rated HP	2,000
Reduction Gear	Twin Disc MGX 5225

Crane (Nautilus) Hydraulic:

Capacity	50 Ton & 175 Ton
Boom Length (50 Ton)	Telescopic 100'
Boom Length (175 Ton)	Fixed 100'

Estimated Speed:

Eight (8) Knots



Pads & Jacking System:

Length	32'
Width	16'
Depth	24'
Configuration	4 Way Slipped
Max. Working Water Depth	175'
Max. Sea Conditions (Jacking Up or Down)	5'

Electronics:

VHF
SSB
Fathometer
Tilt Alarm
GPS
Radar Loud
Hailer
DSS TV

Available Berths:

Excluding Crew

36

DIMENSIONS

LENGTH OVERALL 137'
 LENGTH BARGE ONLY 134'
 BEAM OVERALL 80'
 BEAM BARGE ONLY 78'
 DEPTH BARGE ONLY 10'
 OPEN DECK AREA 6300 SQ/FT

HULL CHARACTERISTICS:

GROSS TONNAGE 195 TONS
 NET TONNAGE 132 TONS
 MAX DECK CARGO 1,252,541 LBS.

LEGS:

NUMBER 3
 LENGTH 215'
 SIZE 72" DIA.
 WALL THICKNESS 1" & 1-1/4"

PADS

LENGTH 32'
 WIDTH 16'
 DEPTH 24'
 CONFIGURATION 4-WAY SLOPED

SPEED

SEVEN AND ONE HALF (7.5) KNOTS

JACKING:

MAXIMUM WORKING WATER DEPTH 175'
 MAXIMUM SEA CONDITIONS 5'
 (JACKING UP OR DOWN)

CRANE: HYDRAULIC

CAPACITY 50 & 175 TON
 BOOM LENGTH (50 TON) TELESCOPIC 100' BOOM
 (175 TON) 100' BOOM
 CRANE ENGINE CUMMINS DIESEL

PROPULSION:

MAIN ENGINES TWO (2) CAT C32
 MAINS HP 2000 HP
 REDUCTION GEAR TWIN DISC MGX5225

GENERATORS:

ENGINES TWO (2) CAT C6.6
 GENERATOR TWO (2) 158 KW

CAPACITIES:

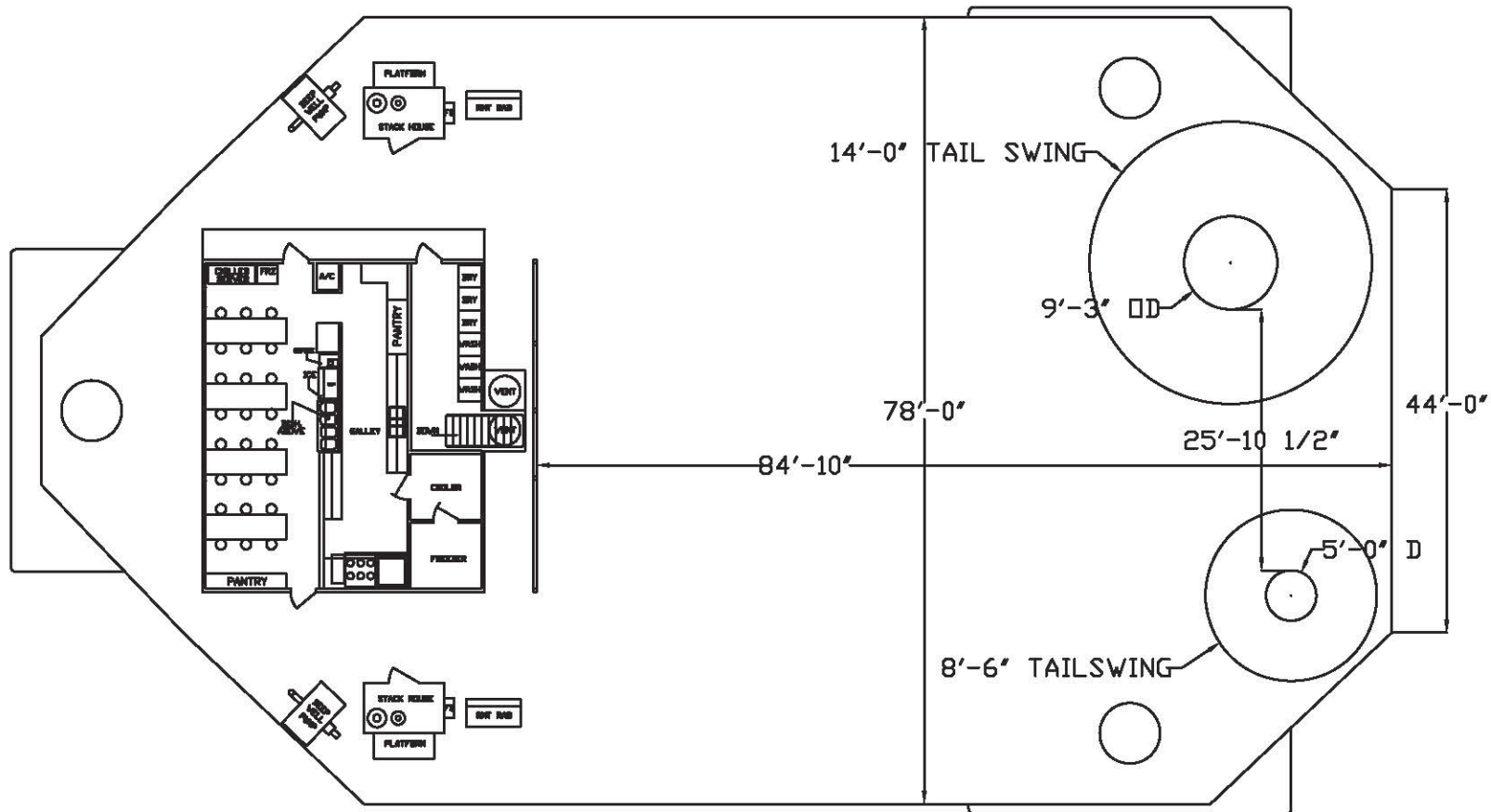
FUEL APPROX. 17,841 GALS.
 POTABLE WATER APPROX. 20,896 GALS.

LIVING QTS.

BERTHS 43 (INCLUDING BOAT CREW)
 A/C & HEATERS CENTRAL
 LOUNGE COLOR TV, SOFAS, LOUNGE SEATS
 HEADS 10-CALL LEVELS)
 GALLEY 24 SEATS, REF. & FRZ.S
 LAUNDRY (2) RANGES, ICE MAKER
 3 PAIRS- WASHER/DRYERS

ELECTRONICS

VHS, SSB, FATHOMETER, LAUD HAILER, TILT ALARM, GPS,
 RADER



Liftboat Class 215'

M/V Ram XVIII, M/V Ram XIX

LIFTBOAT CLASS 215'

LIFTBOAT LOADING CAPACITIES

RAM 175 TON 100FT BOOM
(MAXIMUM SAFE WORKING LOAD)

MAIN HOIST BOOM RADIUS (FT)	MAIN HOIST BOOM ANGLE (degrees)	MAIN HOIST ONBOARD RATING (X 1,000 lbs)	MAIN HOIST OFFBOARD RATING (X 1,000 lbs)	AUX HOIST OFFBOARD RATING (X 1,000 lbs)
26	78	350.000	233.333	18.000
30	76	350.000	233.333	18.000
35	73	350.000	233.333	18.000
40	70	350.000	233.333	18.000
45	67	318.000	212.000	18.000
50	64	283.726	189.151	18.000
55	60	255.685	170.457	18.000
60	57	232.320	154.880	18.000
65	54	212.551	141.701	18.000
70	50	195.609	130.406	18.000
75	46	180.928	120.619	18.000
80	42	168.084	112.056	18.000
85	38	151.884	101.256	18.000
90	33	136.959	91.306	18.000
95	27	122.382	81.588	18.000
100	21	107.329	71.553	18.000
105	11	89.106	59.404	18.000
107	0	72.427	48.285	18.000

Auxiliary Hoist

- Maximum Safe Onboard/Offboard working load 18,000 lbs at all RADII
- Personnel rating all RADII, 3,500 lbs
- Personnel handling max. wave height 6 ft.

LIFTBOAT LOADING CAPACITIES

RAM 50 TON 58/100 FT TELESCOPIC CRANE

(MAXIMUM SAFE WORKING LOAD)

FULLY RETRACTED

MAIN HOIST BOOM RADIUS (FT)	MAIN HOIST BOOM ANGLE (degrees)	MAIN HOIST ONBOARD RATING (X 1,000 lbs)	MAIN HOIST OFFBOARD RATING (X 1,000 lbs)	AUX HOIST OFFBOARD RATING (X 1,000 lbs)
8.5	81	100.000	66.500	6.800
10	80	100.000	66.500	6.800
15	75	100.000	66.500	6.800
20	69	84.687	66.317	6.800
25	65	67.888	45.146	6.800
30	58	54.639	36.335	6.800
35	52	45.141	30.019	6.800
40	46	38.051	25.304	6.800
45	38	32.529	20.388	6.800
50	29	28.088	15.796	6.800
55	14	24.499	11.596	6.800
56.5	0	23.534	9.173	6.800

EXTENDED

MAIN HOIST BOOM RADIUS (FT)	MAIN HOIST BOOM ANGLE (degrees)	MAIN HOIST ONBOARD RATING (X 1,000 lbs)	MAIN HOIST OFFBOARD RATING (X 1,000 lbs)	AUX HOIST OFFBOARD RATING (X 1,000 lbs)
15	82	38.953	25.904	6.800
20	79	34.666	23.053	6.800
25	76	31.351	20.880	6.800
30	73	28.581	19.006	6.800
35	70	26.213	17.432	6.800
40	67	24.285	16.150	6.800
45	64	22.635	14.549	6.800
50	60	21.182	13.133	6.800
55	57	19.942	11.928	6.800
60	53	18.850	10.867	6.800
65	50	17.185	9.345	6.800
70	46	15.541	7.893	6.800
75	41	14.197	6.723	6.800
80	37	12.891	5.622	6.800
85	31	11.659	4.612	6.800
90	25	10.334	3.579	6.800
95	16	9.160	2.637	6.000
98.5	0	8.452	1.622	5.600

Auxiliary Hoist

- All personnel ratings Onboard/Offboard
- Personnel rating all RADII, 2,700 lbs
- Personnel handling max. wave height 4.7 ft.